

# Celiachia: dove si nasconde?

LUIGI GRECO, SIMONA ERRICHELLO

Dipartimento di Pediatria, Università degli Studi di Napoli "Federico II"

Ecco un articolo con una struttura molto speciale: tutto sulla celiachia, quasi senza parole, solo con titoli, figure e con... voci bibliografiche. C'è tutto, o quasi. In fondo, è un aggiornamento monografico (su un problema ormai corrente).

**F**ino a poco tempo fa si cercava la intolleranza al glutine nei soggetti che presentavano importanti sintomi gastrointestinali e gravi deficit nutrizionali.

Recentemente la disponibilità di metodi di screening immunologici ha permesso di identificare molti individui intolleranti definiti "asintomatici". Dunque è sorta l'ipotesi che, nella maggioranza dei casi, la celiachia non provoca alcun sintomo specifico: si tratta di persone in buona salute, che hanno la sfortuna di incappare in medici troppo solerti e "screenologi"!

Ma, rivedendo con cura le singole storie dei tanti "sintomatici", molti Autori hanno scoperto patologie sommerse, talora importanti, occasionalmente molto importanti. Ormai appaiono lavori intitolati "Celiachia asintomatica? O semplicemente non diagnosticata?", e molti medici dell'adulto pensano che la grande maggioranza dei casi diagnosticati "per caso" meritano in realtà un'attenta considerazione da parte dei medici curanti.

Sono dunque fiorite, negli ultimi anni, innumerevoli segnalazioni di sintomi e problemi clinici associati alla malattia; la lista è diventata così estesa da non avere alcun paragone in nessun'altra malattia.

All'interno di questa bella donna celiaca (vedi figura a pagina 438), in apparente buona salute o "asintomatica", possono celarsi una serie innumerevole di problemi clinici: per la maggioranza si tratta di sintomi, talora di patologie associate, altre volte di complicanze.

Nella stragrande maggioranza di

**SEARCHING FOR COELIAC DISEASE: SIGNS, SYMPTOMS, COMPLICATIONS, ASSOCIATED DISEASE** (*Medico e Bambino* 20, 437-447, 2001)

## Key words

*Coeliac disease, Signs, Symptoms, Complications, Associated diseases*

## Summary

*The article offers an overview, based on 329 bibliographic references, of coeliac disease. Typical as well as atypical presenting signs and symptoms are described. The main clinical features, the complications and the associated syndromes and diseases are listed, including all clinical conditions where investigating for possible coeliac disease as a possible underlying cause is recommended.*

questi problemi vi è un'associazione causa-effetto con il glutine.

Non vi è dubbio, però, che alcune associazioni (soprattutto con malattie relativamente rare) possono essere dovute solo al caso: la celiachia infatti è così frequente (1% della popolazione) che può verificarsi frequentemente che chi soffre di un problema del tutto indipendente dalla celiachia possa poi manifestare anche la celiachia, questo sì "per caso".

Questo articolo nasce da una ricerca svolta identificando i lavori pubblicati negli ultimi sei anni (dal 1995 ad aprile 2001), che riportavano condizioni cliniche associate alla celiachia.

I lavori sono stati valutati, classificati per organo e apparato, e stratificati in:

- sintomi tipici;
- sintomi atipici;
- complicanze;
- patologia associata.

Sono stati poi accorpati i problemi clinici molto simili riportati da più Auto-

ri, ed eliminati i report veramente molto occasionali (un solo lavoro, legame con la celiachia molto improbabile).

Quindi abbiamo articolato il lavoro secondo l'organo-apparato coinvolto, la lista dei problemi ad esso riferiti, e la letteratura di riferimento a riguardo.

Ovviamente questo è un prodotto multimediale, da gestire in ipertesto, ma la stampa potrà fornire immediata soddisfazione a singoli quesiti, e anche un punto di riferimento da archiviare.

## SINTOMI, COMPLICANZE E PATOLOGIE ASSOCIATE

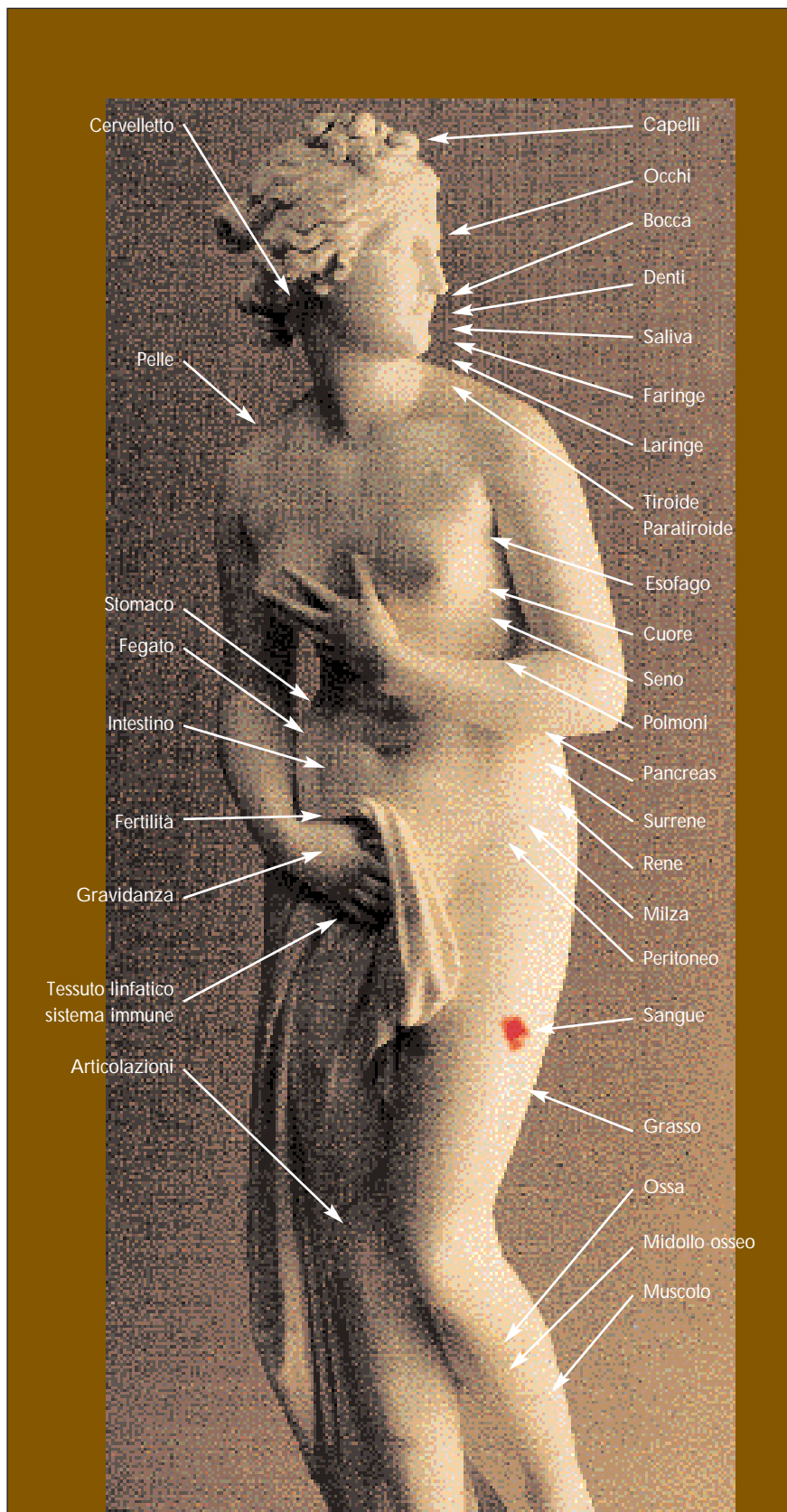
### Legenda

s = sintomi

at = sintomi atipici

sa = sintomi o malattie non direttamente correlate, ma tra le quali la celiachia è frequente (> 5%)

pa = patologia di cui è riportata associa-



zione con legame patogenetico con almeno 5 casi descritti  
co = complicazioni della malattia

**CAPELLI**



- 1. Alopecia (pa, sa) 14-17, 64
- 2. Fragilità della struttura del capello (s) 48

**OCCHI**



- 3. Uveite bilaterale (s) 225, 274
- 4. Sindrome di Sjogren (pa) 2, 131, 183

**BOCCA**



- 5. Ulcere buccali (s, pa) 40
- 6. Patologia cronica della mucosa orale (s, pa) 36, 196
- 7. Malattia di Behçet (pa) 199, 255
- 8. Tumori di bocca-faringe-esofago (co) 1, 329

**SALIVA**

- 9. Composizione salivare alterata (at) 289

**DENTI**



- 10. Lesioni specifiche e cronologiche dello smalto dentario (incisivi, canini,

premolari) (s) 217, 246

11. Lesioni dentarie carenziali (s) 1, 46, 198

#### LARINGE



12. Carcinoma Post-Cricoide (co) 112

#### FARINGE

13. Tumori di bocca-faringe-esofago (co) 1, 329

14. Sindrome di Plummer-Vinson (pa) 112, 145

#### ESOFAGO



15. Disfagia (sa) 170, 226, 256

16. Sindrome di Paterson-Kelly (pa) 317

17. Carcinoma esofageo (co) 138

#### STOMACO



18. Vomito (s) 95

19. Alterazione della motilità gastro-esofagea (at, pa) 44, 60, 65, 207, 261

20. Gastrite follicolare (sa) 250

21. Ulcere gastriche (co) 160, 209

22. Gastrite linfocitica (sa) 43, 128, 132, 160, 181

23. Gastrite da *Helicobacter pylori* (sa) 148, 295, 300, 315

24. Ritardo dello svuotamento gastrico (at, pa) 65

#### INTESTINO TENUE

25. Diarrea cronica (s) 1, 35, 47, 95, 123

26. Malassorbimento (s) 35, 45, 95

27. Gastroenterite con perdita di peso (s) 136

28. Dolore addominale (s) 95

29. Addome protuberante e globoso (s) 1

30. Micronoduli del bulbo duodenale (pa) 230

31. Digiunite ulcerativa e stenosi (co) 180

32. "Bubbly" duodenale (co) 179

33. Ulcera intestinale (sa, pa) 127, 197, 232, 292

#### COLON

34. Colite ulcerativa (pa) 38, 118

35. Colite linfocitica (sa) 120, 283, 306

36. Colite collagenosica (co) 143, 306

37. Invaginazione intestinale (co) 165, 212, 281

38. Volvolo del colon (co) 186

39. Alterazione della motilità del colon (at, pa) 278

40. Emorragia intestinale (co) 208

41. Sanguinamento occulto (co) 235, 316

42. Stipsi con feci "insolite" (at) 95, 242

43. Carcinomi intestinali (co) 62, 132, 161, 168, 193, 210, 223

44. Linfoma intestinale (co, pa) 46, 62, 149, 167, 168, 218, 266, 287, 293

#### PERITONEO

45. Emorragia intraperitoneale (co) 42

46. Linfadenopatia retroperitoneale e "massa" mesenterica (at) 60, 164, 166, 171, 190, 263

#### FEGATO



47. Ipertransaminasemia (at) 95, 124, 130, 142, 162, 320

48. Steatosi epatica (co) 114, 133, 150, 241

49. Epatite autoimmune (pa) 2, 163

50. Dilatazione sinusoidale con iperplasia linfatica (s. di Castleman) (pa) 172

51. Malattia granulomatosa epatica (pa) 233

#### VIE BILIARI

52. Cirrosi biliare primitiva (pa) 41, 134, 135, 195, 204, 211, 296

53. Colangite sclerosante (pa) 147, 254, 260

54. Colangite autoimmune (pa) 139

55. Alterata funzione della cistifellea (pa) 165, 262

#### PANCREAS

56. Insufficienza pancreatica (pa) 44, 262

57. Insufficienza pancreatica congenita (pa) 152

58. Diabete insulino-dipendente (pa)

79, 80, 81, 85-88, 90-94, 97, 104

59. Diabete instabile (pa) 159

60. Steatorrea (s) 170

#### MILZA

61. Iposplenismo (co) 120, 146

62. Trombosi della vena porta e/o splenica (co) 259, 267

#### RENE



63. Infezione urinaria ricorrente (at, pa) 248

64. Sindrome di Bartter (pa) 194

65. Nefropatia IgA (pa) 1, 177

66. Calcoli renali (at, pa) 107

67. Carcinoma renale (co) 111

#### SURRENE

68. Morbo di Addison (pa) 64, 69, 220

#### TIROIDE

69. Tiroidite (pa) 2, 66, 69, 155

70. Insufficienza tiroidea (pa) 1, 2, 68, 71, 75

71. Morbo di Graves (pa) 44, 68, 70, 73

#### PARATIROIDE

72. Carcinoma delle paratiroidi (co) 77

73. Iperparatiroidismo primario (pa) 73

74. Iperparatiroidismo secondario (co) 76, 78, 84

75. Ipoparatiroidismo (at, pa) 82, 92

**SANGUE**

- 76. Anemia sideropenica (s) 55, 235
- 77. Anemie da deficit vitaminico (s) 95, 236, 273
- 78. Anemie carenziali miste (sideropeniche e megaloblastiche) (s) 35, 44, 47, 58, 95, 169
- 79. Eritroblastopenia transitoria (pa) 173
- 80. Coagulopatie da deficit di vitamina K (co) 45, 57, 95, 240, 258
- 81. Porpora trombocitopenica idiopatica (pa) 233
- 82. Diatesi emorragica (co) 221, 252

**LABORATORIO**



- 83. Ipertransaminasemia (s) 95, 320
- 84. Ipo-fosfatemia (s) 73
- 85. Deficit dei fattori della coagulazione (s) 95
- 86. Ipocolesterolemia (s) 59, 314
- 87. Positivita di autoanticorpi (s) 51, 61, 72, 74, 79, 85-88, 224
- 88. Ipo-zinchemia (s) 25, 48, 95
- 89. Iperprolattinemia (s) 25, 48
- 90. Ipo-vitaminosi D (s) 73, 76, 83, 84
- 91. Espressione dell'Ag di membrana prostata-specifico (at) 282
- 92. Ipo-vitaminosi K (co) 236, 258, 276
- 93. Ipocalciuria (s) 268
- 94. Macroцитosi (s) 273
- 95. Macroamilasemia (at) 96, 219, 272
- 96. Macrolipasemia (at) 257
- 97. Iperfosfatemia transitoria (at) 243
- 98. Aumento della fosfatasi alcalina (s) 76, 83
- 99. Ipocalcemia (s) 44, 76, 83, 95, 125
- 100. Ipo-proteinemia (s) 95
- 101. Ipo-glicemia (s) 45
- 102. Ipo-protrombinemia (at) 1, 121
- 103. Emocromatosi (pa) 301

**CUTE**



- 104. Dermatite erpetiforme di Duhring (s) 3, 4, 10, 89, 123
- 105. Psoriasi (pa) 2, 13, 18, 279

- 106. Rash pruriginoso aspecifico (s) 123
- 107. Vitiligine (pa) 14
- 108. Dermatomiostite (pa) 2, 116, b216
- 109. Sclerodermia (pa) 2, 238
- 110. Orticaria cronica (pa) 67, 105
- 111. Prurigo Nodularis (di Hydes) (at) 101
- 112. Erythema elevatum diutinum (at, pa) 6, 7
- 113. Cute lassa generalizzata acquisita (at) 8
- 114. Dermatosi amicrobica pustulare (at) 11
- 115. Dermatosi lineare con deposito di IgA (co) 12
- 116. Eritema migratorio necrolitico (at) 9
- 117. Granuloma cutaneo sarcoidotico (sa) 5
- 118. Ictiosi (at, pa) 288

**MUSCOLI**



- 119. Tetania (s) 227
- 120. Stancchezza muscolare (s, co) 1, 226, 276
- 121. Debolezza muscolare (s, co) 35, 95, 312
- 122. Dermatomiostite (pa) 2, 116, 216
- 123. Polimiosite (pa) 244
- 124. Rabbdomiolisi (pa, co) 276
- 125. Rabbdomiosarcoma (pa, co) 275

**CUORE**



- 126. Cardiomiopatia dilatativa (pa) 37, 98, 110
- 127. Angina pectoris (pa) 45

**OSSA**



- 128. Malattia di Whipple (pa) 247

- 129. Dolore osseo (co) 245
- 130. Osteoporosi (co) 19-22, 44, 46, 76, 284, 309
- 131. Osteomalacia (co) 73
- 132. Fratture spontanee e osteoporotiche (co) 245, 303

**ARTICOLAZIONI**

- 133. Artriti non specifiche (at, sa) 26, 49, 109, 244, 303
- 134. Artrite reumatoide in adulti (sa) 51, 269
- 135. Artrite reumatoide giovanile (at) 50, 53
- 136. Sacroileite (pa) 26, 52
- 137. Artrite del ginocchio (at) 26
- 138. Monoartriti ricorrenti (at) 54

**ADIPE**



- 139. Cachessia (s) 44, 95
- 140. Perdita di peso (s) 35, 44, 45, 95
- 141. Anoressia (s) 1, 290, 328
- 142. Aspetto 'misero' e carenziale (s) 1, 45

**POLMONE**



- 143. Broncopneumopatia eosinofila (pa) 44
- 144. Bronchiectasie (pa) 56
- 145. Sepsis pneumococcica grave (co) 156
- 146. Sarcoidosi (pa) 1, 5, 119

**SISTEMA NERVOSO CENTRALE**

- 147. Epilessia con calcificazioni occipitali (pa) 1, 2, 100, 178, 188, 305, 322, 323, 324
- 148. Angiomatosi calcificante meningocorticale (pa) 61, 63
- 149. Encefalopatia posteriore reversibile (pa) 122
- 150. Encefalopatia spongiforme (pa) 115
- 151. Patologia neurologica mal definita

- (pa) 34, 46, 305  
 152. Emicrania (at) 63, 327  
 153. Sindrome tensione-fatica (s, pa) 35, 95, 176, 294  
 154. Leucoencefalopatia (pa) 192  
 155. Oftalmoplegia internucleare (pa) 308  
 156. Somatostatinoma (pa, co) 318

**SISTEMA NERVOSO PERIFERICO**

157. Disordini neuromuscolari (pa) 200  
 158. Neuropatie periferiche (pa) 144, 174, 277  
 159. Mioclonie (pa) 308, 313  
 160. Debolezza muscolare (s) 1, 226, 276  
 161. Mononeuropatia multipla (pa) 249  
 162. Neuropatia autonoma (pa) 239

**CERVELLETTO**

163. Atassia cerebellare (pa) 34, 99, 106, 154, 158  
 164. Sindromi cerebellari (pa) 205  
 165. Atassia-disturbi della deambulazione da deficit di vit.E (pa) 175  
 166. Atassia progressiva mioclonica (pa) 265

**PSICHE**



167. Depressione (at) 137, 191, 229  
 168. Infelicità non spiegata (at) 1, 191  
 169. Alterate manifestazioni del sistema nervoso (co, pa) 61  
 170. Sintomi schizofrenici (at) 201  
 171. Disturbi sessuali e comportamentali (at) 1, 39, 229

**MAMMELLA**

172. Interruzione precoce dell'allattamento (co) 33, 319

**RIPRODUZIONE**



173. Infertilità (s, sa, co) 23-27, 35  
 174. Amenorrea (s) 25, 29, 302, 319  
 175. Ritardo del menarca (dopo 14 anni) (s) 25, 30, 31, 302  
 176. Aborto spontaneo (s, co) 1, 24, 25, 29, 30, 32, 33, 228, 286  
 177. Menopausa precoce (s) 25, 29, 30, 31, 302, 319  
 178. Vulvodinia (at) 231  
 179. Disfunzione sessuale (co, s) 25, 39  
 180. Patologia della placenta (co) 321  
 181. Basso peso alla nascita (s) 28, 33, 302, 319, 321  
 182. Ritardo della crescita intrauterina (co) 1, 27, 286  
 183. Puerperio complicato (co) 30, 185  
 184. Anemia grave in gravidanza (co) 1, 27, 321  
 185. Gravidanza complicata (co) 28, 30, 31, 228, 321



**PAATOLOGIE SISTEMICHE**

186. Lupus erimatoso sistemico (pa) 2, 129, 213, 270  
 187. Malattia di Crohn (pa) 151  
 188. Sindrome di Down (pa) 1, 102, 108, 109, 202, 222, 305, 310, 311  
 189. Sindrome di Turner (pa) 103, 113, 140, 187, 260, 298, 299, 307  
 190. Sindrome di Williams (pa) 234, 280  
 191. Sindrome del 18q (pa) 117  
 192. Aberrazioni cromosomiche (pa) 182  
 193. Sindrome di Floating-Harbor (pa) 253  
 194. Poliendocrinopatia (pa) 73, 92  
 195. Sindrome di Sjoegren (pa) 2, 131, 183

**TESSUTO LINFATICO**

196. Linfoma intestinale (co, pa) 46, 62, 149, 167, 168, 208, 218, 266, 293  
 197. Linfoma della tiroide (co, pa) 285  
 198. Linfomi extraintestinali (co) 12  
 199. Linfoma di Burkitt (co, pa) 264  
 200. Linfomatosi disseminata (co) 126  
 201. Attivazione del MALT (co) 184

**SISTEMA IMMUNITARIO**

202. Coagulopatie da autoanticorpi (pa) 2, 224, 271

203. Malattie autoimmuni e connettivopatie (pa, sa) 2, 46, 74  
 204. Sindrome da antifosfolipidi (pa) 157  
 205. Arterite di Horton (pa) 251  
 206. Deficit di IgA (pa) 1, 87, 140, 189, 203, 206, 214, 215  
 207. Immunodeficienze transitorie (pa) 1, 203, 206

*N.B. Vanno considerate condizioni di rischio, che giustificano l'approfondimento diagnostico sierologico (EMA, TH.) le seguenti condizioni morbose:*

**PARASSITOLOGIA**

208. Giardiasi recidivante  
 209. Giardiasi con deficit di IgA  
 210. Diarrea persistente da agenti infettivi

**INFETTIVOLOGIA**



211. Ritardo di guarigione di malattie infettive ordinarie  
 212. Sviluppo di ipoproteinemia durante malattie infettive  
 213. Perdita di peso inattesa durante la convalescenza di patologia infettiva (epatite, scarlattina, brucellosi, parotite ecc.)  
 214. Citomegalovirus (ulcere gastriche) (co, pa) 209

**PEDIATRIA (in aggiunta alle precedenti)**



215. Bambino che "perde percentili" di peso tra il primo e il secondo anno di vita  
 216. Perdite di peso inspiegate dopo i primi due anni  
 217. Anoressia marcata in bambino che prima mangiava  
 218. Pica (at, pa) 141, 237  
 219. Alopecia (at) 16  
 220. Bassa statura isolata (s) 1, 89

MEDICINA DI BASE

- In aggiunta alla lista precedente
- Tutti i familiari (1° e 2° grado) di soggetti celiaci noti
- Familiari di pazienti con malattie autoimmuni

LETTERATURA DI RIFERIMENTO

1. Troncone R, Greco L, Auricchio S. Gluten-sensitive enteropathy. *Pediatric Gastroenterology*, 1996;43:335-73.
2. Ventura A, Magazzù G, Greco L. Duration of Exposure to gluten and risk of autoimmune disorders in patients with coeliac disease. *Gastroenterology* 1999;11:297-303.
3. Egan CA, O'Loughlin S, Gormally S, et al. Dermatitis herpetiformis: a review of fifty-four patients. *Ir J Med Sci* 1997 Oct-Dec;166(4):241-4.
4. Reunala T. Dermatitis herpetiformis: coeliac disease of the skin. *Ann Med* 1998;30(5):416-8.
5. Loche F, Bazex J. Celiac disease association with cutaneous sarcoidosis granuloma. *Med Interne* 1997;18(12):975-8.
6. Tasanen K, Raudasoja R, Kallioinm M, et al. Erythema elevatum diutinum in association with coeliac disease. *Br J Dermatol* 1997 April;136(4):624-7.
7. Rodriguez-Serna M, Fortea JM, Perez A, et al. Erythema elevatum diutinum associated with coeliac disease: response to a gluten-free diet. *Pediatr Dermatol* 1993 June;10(2):125-8.
8. Garcia-Patos V, Pujol RM, Barnadas MA, et al. Generalized acquired cutis laxa associated with coeliac disease: evidence of immunoglobulin A deposits on the dermal elastic fibres. *Br Dermatol* 1996 Jul;135(1):130-4.
9. Thorisdottir K, Camisa C, Tomecki KJ, et al. Necrolytic migratory erythema: a report of three cases. *J Am Acad Dermatol* 1994 Feb;30(2 Pt 2):324-9.
10. Collin P, Pukkala E, Reunala T. Malignancy and survival in dermatitis herpetiformis: a comparison with coeliac disease. *Gut* 1996 Apr;38(4):528-30.
11. Marzano AV, Capsoni F, Berti, et al. Amicrobial pustular dermatosis of cutaneous folds associated with autoimmune disorders: a new entity? *Dermatology* 1996;193(2):88-93.
12. Kapur A, Isaacs PE, Kelsey PR. Linear IgA dermatosis, coeliac disease, and extraintestinal B cell lymphoma. *Gut* 1995 Nov;37(5):731-3.
13. Cottafava F, Cosso D. Psoriatic arthritis and celiac in childhood. A case report. *Pediatr Med Chir* 1991 Jul-Aug;13(4):431-3.
14. Volta U, Bardazzi F, Zauli D, et al. Serological screening for coeliac disease in vitiligo and alopecia areata. *Br J Dermatol* 1997 May;136(5):801-2.
15. Barbato M, Viola F, Grillo R, et al. Alopecia and coeliac disease: report of two patients showing response to gluten-free diet. *Clin Exp Dermatol* 1998 Sept;23(5):236-7.
16. Naveh Y, Rosenthal E, Ben-Arieh Y, et al. Celiac disease-associated alopecia in childhood. *J Pediatr* 1999 Mar;344(3):362-4.
17. Corazza GR, Andreani ML, Ventura N, et al. Coeliac disease and alopecia areata: report of a new association. *Gastroenterology* 1995 Oct;109(4):133-7.
18. Michaelsson G, Gerden B. How common is gluten intolerance among patients with psoriasis? *Acta Derm Venereol* 1991;71(1):90
19. Valdimarsson T, Arnqvist HJ, Toss G, et al. Low circulating insulin-like growth factor-I in coeliac disease and its relation to bone mineral density. *Scand J Gastroenterol* 1999 Sept;34(9):904-8.
20. Mora S, Barera G, Beccio S, et al. Bone density and bone metabolism are normal after long-term gluten-free diet in young coeliac patient. *Am J Gastroenterol* 1999 Feb;94(2):398-403.
21. Kempainen T, Kroger H, Janatuinen E, et al. Bone recovery after a gluten-free diet: a 5-year follow-up study. *Bone* 1999 Sept;25(3):355-60.
22. Kempainen T, Kroger H, Janatuinen E, et al. Osteoporosis in adult patients with coeliac disease. *Bone* 1999 Mar;24(3):249-55.
23. Meloni GF, Dessole S, Vargiu N, et al. The prevalence of coeliac disease in infertility. *Hum Reprod* 1999 Nov;14(11):2759-61.
24. Kolho KL, Tiitinen A, Tulppala M, et al. Screening for coeliac disease in women with a history of recurrent miscarriage or infertility. *Br J Obstet Gynaecol* 1999 Feb;106(2):171-3.
25. Sher KS, Jayanthi V, Probert CS, et al. Infertility, obstetric and gynaecological problems in coeliac sprue. *Dig Dis* 1994 May-Jun;12(3):186-90.
26. Slot O, Loch H. Arthritis as presenting symptom in silent adult coeliac disease. Two cases and review of the literature. *Scand J Rheumatol* 2000;29 (4):260-3.
27. Collin P, Vilksa S, Heinonen PK, et al: Infertility and coeliac disease. *Gut* 1996 Sept;39(3):382-4.
28. Norgard B, Fonager K, Sorensen HT, et al. Birth outcomes of women with coeliac disease: a nationwide historical cohort study. *Am J Gastroenterol* 1999 Sept;94(9):2435-40.
29. Molteni N, Bardella MT, Bianchi PA. Obstetric and gynecological problems in women with untreated coeliac sprue. *J Clin Gastroenterol* 1990 Feb;12(1):37-9.
30. Smecul E, Maurino E, Vazquez H, et al. Gynaecological and obstetric disorders in coeliac disease: frequent clinical onset during pregnancy or the puerperium. *Eur J Gastroenterol Hepatol* 1996 Jan;8(1):63-89.
31. Sher KS, Mayberry JF. Female fertility, obstetric and gynaecological history in coeliac disease: a case control study. *Acta Paediatr (Suppl)* 1996 May;412:76-7.
32. Dondorp AM, de Groot GH. Onset of coeliac disease after a spontaneous miscarriage during a holiday in Australia: coincidence or causal relationship? *Neth J Med* 1998 Apr;52(4):147-9.
33. Ciacci C, Cirillo M, Auriemma G, et al. Celiac disease and pregnancy outcome. *Am J Gastroenterol* 1996 Apr;91(4):718-22.
34. Luostarinen L, Pirttila T, Collin P. Coeliac Disease Presenting with Neurological Disorders. *Eur Neurol* 1999 Oct;42(3):132-5.
35. Hin H, Bird G, Fisher P, et al. Coeliac disease in primary care: case finding study. *BMJ* 1999;318:164-7.
36. Jokinen J, Peters U, Maki M, et al. Celiac sprue in patients with chronic oral mucosal symptoms. *J Clin Gastroenterol* 1998 Jan;26(1):23-6.
37. Curione M, Barbato M, De Biase L, et al. Prevalence of coeliac disease in idiopathic dilated cardiomyopathy. *Lancet* 1999 Jul 17;354(9174):222-3.
38. Kull K, Uibo O, Salupere R, et al. High frequency of anti gliadin antibodies and absence of antireticulum and antiendomysium antibodies in patients with ulcerative colitis. *J Gastroenterol* 1999 Feb;34(1):61-5.
39. Ciacci C, Derosa A, de Michele G, et al. Sexual behaviour in untreated and treated coeliac patients. *Eur J Gastroenterol Hepatol* 1998 Aug; 10(8):649-51.
40. Lahteenoja H, Toivanen A, Viander M, et al. Oral mucosal changes in coeliac patients on gluten-free diet. *Eur J Oral Sci* 1998 Oct;106(5):899-906.
41. Sorensen HT, Thulstrup AM, Blomqvist P, et al. Risk of primary biliary liver cirrhosis in patients with coeliac disease: Danish and Swedish cohort data. *Gut* 1999 May;44(5):736-8.
42. Cameron EA, Stewart JA, West KP, et al. Coeliac disease presenting with intra peritoneal haemorrhage. *Eur J Gastroenterol Hepatol* 1998 Jul;10(7):619-20.
43. Jevon GP, Dimmick JE, Dohil R, et al. Spectrum of gastritis in coeliac disease in childhood. *Pediatr Dev Pathol* 1999 May-Jun;2(3):221-6.
44. Delco F, El-Serag HB, Sonnenberg A. Celiac sprue among US military veterans: associated disorders and clinical manifestation. *Dig Dis Sci* 1999 May;44(5):966-72.
45. Bhattacharyya A, Patel Mk, Tymms DJ. Coeliac disease in adult: variations on a theme. *J R Soc Med* 1999 Jun;92(6):286-9.
46. Prussner HT. Detecting coeliac disease in your patients. *Am Fam Physician* 1998 Mar 1;57(5):1023-34,1039-41.
47. Dickey W, McConnel JB. How many hospital visits does it take before coeliac sprue is diagnosed? *J Clin Gastroenterol* 1996 Jul;23(1):21-3.
48. Varkonyi A, Boda M, Endreffy E, et al. Coeliac disease: always something to discover. *Scand J Gastroenterol Suppl* 1998;228:122-9.
49. Lubrano E, Ciacci C, Ames PR, et al. The arthritis of coeliac disease: prevalence and pattern in 200 adult patients. *Br J Rheumatol* 1996 Dec;35(12):1314-8.
50. George EK, Hertzberger-ten Cate, van Suijlekom-Smit LW, et al. Juvenile chronic arthritis and coeliac disease in The Netherlands. *Clin Exp Rheumatol* 1996 Sep-Oct;14(5):571-5.
51. Paimela L, Kurki P, Leirisalo-Repo M, et al. Gliadin immune reactivity in patients with rheumatoid arthritis. *Clin Exp Rheumatol* 1995 Sep-Oct;13(5):603-7.
52. Usai P, Boi MF, Piga M, et al. Adult coeliac disease is frequently associated with sacroiliitis. *Dig Dis Sci* 1995 Sept;40(9):1906-8.
53. Lepore L, Martellosi S, Pennesi M, et al. Prevalence of coeliac disease in patients with juvenile chronic arthritis. *J Pediatr* 1996 Aug;129(2):311-3.
54. Falcini F, Ferrari R, Simonini G, et al. Recurrent monoarthritis in an 11-year-old boy with occult coeliac disease. Successful and stable remission after gluten-free diet. *Clin Exp Rheumatol* 1999 Jul-Aug;17(4):509-11.
55. Carroccio A, Iannitto E, Cavataio F; et al. Sideropenic anemia and coeliac disease: one study, two points of view. *Dig Dis Sci* 1998 Mar; 43(3):673-8.
56. Mahadeva R, Flower C, Shneerson J. Bronchiectasis in association with coeliac disease. *Thorax* 1998 Jun;53(6):527-9.
57. Laudage G, Schirp J. Life threatening epistaxis due to plasma coagulation disorder as a partial manifestation of gluten sensitive enteropathy. *Leber Magen Darm* 1995 Mar; 25(2):94-6.
58. Corazza GR, Valentini RA, Andreani ML, et al. Subclinical coeliac disease is a frequent cause of iron-deficiency anaemia. *Scand J Gastroenterol* 1995 Feb;30(2):153-6.
59. Ciacci C, Cirillo M, Giorgetti G, et al. Low

- plasma cholesterol: a correlate of nondiagnosed celiac disease in adult with hypochromic anemia. *Am J Gastroenterol* 1999 Jul;94(7):1888-91.
60. Rettenbacher T, Hollerweger A, Macheiner P, et al. Adult celiac disease: US signs. *Radiology* 1999 May;211(2):389-94.
61. Pratesi R, Gandolfi R, Friedman H, et al: Serum IgA antibodies from patients with coeliac disease react strongly with human brain blood-vessel structures. *Scand J Gastroenterol* 1998 Aug;33(8):817-21.
62. Johnston SD, Watson RG, McMillan SA, et al. Coeliac disease detected by screening is not silent simply unrecognized. *QJM* 1998 Dec; 91(12):853-60.
63. La Mantia L, Pollo B, Savoirdo M, et al. Meningo-cortical calcifying angiomatosis and celiac disease. *Clin Neurol Neurosurg* 1998 Sept; 100(39):209-15.
64. Kaukinen K, Collin P, Mykkanen AH, et al. Celiac disease and autoimmune endocrinologic disorders. *Dig Dis Sci* 1999 Jul;44(7):1428-33.
65. Usai P, Usai Satta P, Lai M, et al. Autonomic dysfunction and upper digestive functional disorders in untreated adult coeliac disease. *Eur J Clin Invest* 1997 Dec;27(12):1009-15.
66. Valentino R, Savastano S, Tommaselli AP, et al. Prevalence of coeliac disease in patients with thyroid autoimmunity. *Horm Res* 1999;51(3): 124-7.
67. Levine A, Dalal I, Bujanover Y. Celiac disease associated with familial chronic urticaria and thyroid autoimmunity in a child. *Pediatrics* 1999 Aug;104(2):e25.
68. Cuoco L, Certo M, Jorizzo RA, et al. Prevalence and early diagnosis of coeliac disease in autoimmune thyroid disorders. *Ital J Gastroenterol Hepatol* 1999 May;31(4):283-7.
69. Valentino R, Savastano S, Tommaselli AP, et al. Unusual association of thyroiditis, Addison's disease, ovarian failure and celiac disease in a young woman. *J Endocrinol Invest* 1999 May; 22(5):390-4.
70. Caroccio A, Custro N, Montalto G, et al. Evidence of tranicent IgA anti-endomysial antibody positivity in a patients with Graves' disease. *Digestion* 1999 Jan-Feb;60(1):86-8.
71. Sategna-Guidetti C, Bruno M, Mazza E, et al. Autoimmune thyroid diseases and coeliac disease. *Eur J Gastroenterol Hepatol* 1998 Nov; 10(11):927-31.
72. Velluzzi F, Caradonna A, Boi MF, et al. Thyroid and celiac disease: clinical, serological, and echographic study. *Am J Gastroenterol* 1998 Jun;93(6):976-9.
73. Gannage MH, Abikaram G, Nasr F, et al. Osteomalacia secondary to celiac disease, primary hyperparathyroidism, and Graves' disease. *Am J Med Sci* 1998 Feb;315(2):136-9.
74. Corazza GR, Biagi F, Volta U, et al. Autoimmune enteropathy and villous atrophy in adult. *Lancet* 1997 Jul;12,350(9071):106-9.
75. Counsell CE, Taha A, Ruddell WS. Coeliac disease and autoimmune thyroid disease. *Gut* 1994 Jun;35(6):844-6.
76. Shaker JL, Brickner RC, Findling JW, et al. Hypocalcemia and skeletal disease as presenting features of celiac disease. *Arc Intern Med* 1997 May;12,57(9):1013-6.
77. Boyle NH, Ogg CS, Hartley RB, et al. Parathyroid carcinoma secondary to prolonged hyperplasia in chronic renal failure and in coeliac disease. *Eur J Surg Oncol* 1999 Feb;25(1):100-3.
78. Selby PL, Davies M, Adams JE, et al. Bone loss in celiac disease is related to secondary hyperparathyroidism. *J Bone Miner Res* 1999 Apr; 14(4):652-7.
79. Cronin CC, Feighery A, Ferriss JB, et al. High prevalence of celiac disease among patients with insulin-dependent (type I) diabetes mellitus. *Am J Gastroenterol* 1997 Dec;92(12):2210-2.
80. Vitoria JC, Castano L, Rica I, et al. Association of insulin-dependent diabetes mellitus and celiac disease: a study based on serologic markers. *J Pediatr Gastroenterol Nutr* 1998 Jul; 27(1):47-52.
81. Acerini CL, Ahmed ML, Ross KM, et al. Coeliac disease in children and adolescents with IDDM: clinical characteristics and response to gluten-free diet. *Diabet Med* 1998 Jan;15(1):38-44.
82. Kumar V, Valeski JE, Wortsman J. Celiac disease and hypoparathyroidism: cross-reaction of endomysial antibodies with parathyroid tissue. *Clin Diagn Lab Immunol* 1996 Mar;3(2):143-6.
83. Molteni N, Bardetella MT, Vezzoli G, et al. Intestinal calcium absorption as shown by stable strontium test in celiac disease before and after gluten-free diet. *Am J Gastroenterol* 1995 Nov; 90(11):2025-8.
84. Keaveny AP, Freaney R, McKenna MJ, et al. Bone remodeling indices and secondary hyperparathyroidism in celiac disease. *Am J Gastroenterol* 1996 Jun;91(6):1226-31.
85. Rapoport MJ, Bistrizter T, Vardi O, et al. Increased prevalence of diabetes-related autoantibodies in celiac disease. *J Pediatr Gastroenterol Nutr* 1996 Dec;23(5):524-7.
86. Talal AH, Murray JA, Goeken JA, et al. Celiac disease in an adult population with insulin-dependent diabetes mellitus: use of endomysial antibody testing. *Am J Gastroenterol* 1997 Aug;92(8):1280-4.
87. Fraser-Reynolds KA, Butzner JD, Stephure DK, et al. Use of immunoglobulin A-antiendomysial antibody to screen for celiac disease in North American children with type 1 diabetes. *Diabetes Care* 1998 Nov;21(11):1985-9.
88. Roldan MB, Barrio R, Roy G, et al. Diagnostic value of serological markers for celiac disease in diabetic children and adolescents. *J Pediatr Endocrinol Metab* 1998 Nov-Dec;11(6):751-6.
89. Bottaro G, Cataldo F, Rotolo N, et al. The clinical pattern of subclinical/silent celiac disease. An analysis on 1026 consecutive cases. *Am J Gastroenterol* 1999 Mar;94(3):691-6.
90. Savilahti E, Ormala T, Saukkonen T, et al. Jejuna of patients with insulin-dependent diabetes mellitus (IDDM) show signs of immune activation. *Clin Exp Immunol* 1999 Apr;116(1):70-7.
91. Carlsson AK, Axelsson IE, Borulf SK, et al. Prevalence of IgA-antiendomysium and IgA-antigliadin autoantibodies at diagnosis of insulin-dependent diabetes mellitus in Swedish children and adolescents. *Pediatrics* 1999 Jun;103(6 Pt 1):1248-52.
92. Wortsman J, Kumar V. Case report: idiopathic hypoparathyroidism co-existing with celiac disease: immunologic studies. *Am J Sci* 1994 Jun;307(6):420-7.
93. O'Connor TM, Cronin CC, Loane JF, et al. Type 1 diabetes mellitus, celiac disease, and lymphoma: a report of four cases. *Diabet Med* 1999 Jul;16(7):614-7.
94. Helopainen P, Arvas M, Sistonen P, et al. CD28/CTLA4 gene region on chromosome 2q33 confers genetic susceptibility to celiac disease. A linkage and family-based association study. *Tissue Antigen* 1999 May;53(5):470-5.
95. Bode S, Gudmand-Hoyer E. Symptoms and haematological features in consecutive adult coeliac patients. *Scand J Gastroenterol* 1996 Jan;31(1):54-60.
96. Viswanath S, Wynne K. Macroamylasaemia - a prognostic marker in a syndrome of malabsorption and complete villous atrophy? An uncommon clinical condition. *Eur J Gastroenterol Hepatol* 1999 Nov;11(11):1321-2.
97. Verge CF, Howard NJ, Rowley MJ. Anti-glutamate decarboxylase and other antibodies at the onset of childhood IDDM: a population-based study. *Diabetology* 1994 Nov;37(11):1113-20.
98. Fonager K, Sorensen HT, Norgard B, et al. Cardiomyopathy in Danish patients with coeliac disease. *Lancet* 1999 Oct;33,354(9189):1561.
99. Pellacchia MT, Scala R, Perretti A, et al. Cerebellar ataxia associated with subclinical celiac disease responding to gluten-free diet. *Neurology* 1999 Oct 22;53(7):1606-8.
100. Martinez - Bermejo A, Polanco I, Royo A, et al. A study of Gobb's syndrome in Spanish population. *Rev Neurol* 1999 Jul;16-31,29(2):105-10.
101. Francesco Stefanini G, Resta F, Marsigli L, et al. Prurigo nodularis (Hyde' prurigo) disclosing celiac disease. *Hepatogastroenterology* 1999 Jul - Aug;46(28):2281-4.
102. Puschel SM, Romano C, Failla P, et al. A prevalence study of celiac disease in person with Down syndrome residing in the United States of America. *Acta Paediatr* 1999 Sept;88(9): 953-6.
103. Ivarsson SA, Carlsson A, Bredberg A, et al. Prevalence of coeliac disease in Turner syndrome. *Acta Paediatr* 1999 Sep;88(9):933-6.
104. Mekaoar A, Chihauoi M, Taktak S, et al. Association of diabetes mellitus and other organ specific autoimmune disease 51 cases. *Tunis Med* 1999 May;77(5):276-80.
105. Scala E, Giani M, Pirrotta L, et al. Urticaria and adult celiac disease. *Allergy* 1999 Sept;54(9):1008-9.
106. Hadjivassiliou M, Grunewald RA, Davies-Jones GA. Idiopathic cerebellar ataxia associated with celiac disease: lack of distinctive neurological features. *J Neurol Neurosurg Psychiatry* 1999 Aug;67(2):257.
107. Gama R, Schweitzer FA. Renal calculus: a unique presentation of coeliac disease. *BJU Int* 1999 Sept;528-9.
108. Hansson T, Anneren G, Sjoberg O, et al. Celiac disease in relation to immunologic serum markers, trace elements, and HLA-DR and DQ antigens in Swedish children with Down syndrome. *J Pediatr Gastroenterol Nutr* 1999 Sept; 29(3):286-92.
109. Papadatou B, Ferretti F, Giannotti A, et al. Antigliadin and antiendomysial antibodies in children with Down's syndrome. *Dig Liver Dis* 2000 Jun-Jul;32(5):453.
110. Cuoco L, Certo M, Jorizzo RA, et al. Prevalence of celiac disease in idiopathic dilated cardiomyopathy. *Lancet* 1999 Jul 17;354(9174): 222-3.
111. Etienney I, Levy M, Lepicard A, et al. Pancreatic metastasis of a renal adenocarcinoma manifesting as steatorrhea. *Gastroenterol Clin Biol* 1999 Apr;23(4):538-40.
112. Rashid Z, Kumar A, Komar M. Plummer-Vinson syndrome and postcricoid carcinoma: late complications of unrecognized celiac disease. *Am J Gastroenterol* 1999 Jul;94(7):1967-9.
113. Bonamico M. Celiac disease and Turner syndrome. *J Pediatr Gastroenterol Nutr* 1999 Jul;29(1):107-8.
114. Christl SU, Muller JG. Fatty liver in adult celiac disease. *Dtsch Med Wochenschr* 1999

- Jun 4;124(22):691-4.
115. Beaugerie L, Andre C, Laplanche JL. Search for asymptomatic coeliac disease in patients with spongiform encephalopathy. *Gastroenterol Clin Biol* 1999 Mar;23(3):945-50.
  116. Falcini F, Porfirio B, Lionetti P. Juvenile dermatomyositis and celiac disease. *J Rheumatol* 1999 Jun;26(6):1419-20.
  117. Lipschutz W, Cadranet S, Lipschutz B, et al. 18q-syndrome with coeliac disease. *Eur J Pediatr* 1999 Jun;158(6):528.
  118. Day AS, Abbott GD. Simultaneous presentation of celiac disease and ulcerative colitis in a child. *J Paediatr Child Health* 1999 Apr;35(2):204-6.
  119. Papadopoulos KI, Sjoberg K, Lindgren S, et al. Evidence of gastrointestinal immune reactivity in patients with sarcoidosis. *J Internal Med* 1999 May;245(5):525-31.
  120. Freeman HJ. Hyposplenism, antiendomyosial antibodies and lymphocytic colitis in collagenous sprue. *Can J Gastroenterol*. 1999 May;13(4):347-50.
  121. Hussaini SH, Ahmed S, Heatley RV. Celiac disease and hypoprotrombinemia. *Nutrition* 1999 May;15(5):389-91.
  122. Munchau A, Vogel P. Reversible posterior encephalopathy possibly related to celiac disease: a vitamin-depleted brain? *Eur Neurol* 1999;(4):232-4.
  123. Archer TP, Burgun SJ, Frankel WL, et al. A pruritic skin rash followed by chronic diarrhea. *Hosp Pract (Off Ed)* 1999 May 15;34(5):125-6, 131-2.
  124. Novacek G, Miessler W, Wrba F, et al. Prevalence and clinical importance of hypertransaminasaemia in celiac disease. *Eur J Gastroenterol Hepatol* 1999 Mar;11(3):283-8.
  125. Matteoni CA, Vargo JI 2nd. A42-years-old man with microcytic anemia and hypocalcemia. *Cleve Clin J Med* 1999 May;66(5):2.
  126. Kulshreshta MK, Honan WP, Aluwihare N, et al. Coeliac disease and disseminated lymphomatosis. *J R Soc Med* 1998 Nov;9(11):594-6.
  127. Salerno G, Castiglia M, Barbiera F, et al. [Intestinal complications of celiac disease in adults. A case of ulcerative enteritis]. *Radiol Med (Torino)* 1999 Jan-Feb;(1-2):94-5 (Ed.it.).
  128. Diamanti A, Maino C, Niveloni S, et al. Characterization of gastric mucosal lesions in patients with celiac disease: a prospective controlled study. *Am J Gastroenterol* 1999 May;94(5): 1313-9.
  129. Mercie P, Villard JF, Faure I, et al. Association of celiac disease and lupus. *Presse Med* 1999 Mar;13,28(10):532.
  130. Gonzalez-Abraldes J, Sanchez-Fueyo A, Bessa X, et al. Persistent hypertransaminasaemia as the presenting feature of celiac disease. *Am J Gastroenterol* 1999 Apr;94(4):1095-7.
  131. Iltanen S, Collin P, Korpela M, et al. Celiac disease and markers of celiac disease latency in patients with primary Sjogren's syndrome. *Am J Gastroenterol* 1999 Apr;94(4):1042-6.
  132. Widgren S, Leyvraz S. Adenocarcinoma of the small bowel, celiac disease, and lymphocytic gastritis. *J Clin Pathol* 1998 Nov;51(11):878-9.
  133. Zippelius A, Diebold J. Images in hepatology. Steatosis hepatic in celiac disease. *J Hepatol* 1999 Mar;30(3):531.
  134. Fidler HM, Butler P, Burroughs AK, et al. Co-screening for primary biliary cirrhosis and celiac disease. Primary biliary cirrhosis and celiac disease: a study of relative prevalences. *Gut* 1998 Aug;43(2):300.
  135. Dickey W, McMillan SA. Co-screening for primary biliary cirrhosis and celiac disease. Association between primary biliary cirrhosis and coeliac disease. *Gut* 1998 Aug;43(2):300.
  136. Zimmer KP. From acute gastroenteritis to celiac disease. *Pediatric Gastroenterology. Fortschr Med*. 1999 Jan 30;117(3): 35-8.
  137. Corvaglia L, Catamo R, Pepe G, et al. Depression in adult untreated celiac subjects: diagnosis by the pediatrician. *Am J Gastroenterol* 1999 Mar;94(3):839-43.
  138. Saad R, Bellec V, Dugay J, et al. Association of celiac disease and esophageal small cell carcinoma. *Presse Med* 1999 Feb;13,28(6):277-8.
  139. Gogos CA, Nikolopoulou V, Zolota V, et al. Autoimmune cholangitis in a patient with celiac disease: a case report and review of the literature. *J Hepatol* 1999 Feb;30(2):321-4.
  140. Schewior S, Brand M, Santer R. Celiac disease and selective IgA deficiency in a girl with atypical Turner syndrome. *J Pediatr Gastroenterol Nutr* 1999 Mar;28(3):353-4.
  141. Alvarez Martin T, Anso Oliván S, Prieto Contero I, et al. Pica as a form of presentation of celiac disease. *An Esp Pediatr* 1998 Nov;49(5): 542-3.
  142. Bardella MT, Vecchi M, Conte D, et al. Chronic unexplained hypertransaminasaemia may be caused by celiac disease. *Hepatology* 1999 Mar;29(3):654-7.
  143. Barbato M, Viola F, Russo LL, et al. Microscopic and collagenous colitis in treated celiac disease due to food allergy? *Gastroenterology* 1999 Mar;116(3):778.
  144. Polizzi A, Finocchiaro M, Parano E, et al. Recurrent peripheral neuropathy in a girl with celiac disease. *J Neurol Neurosurg Psychiatry* 2000 Jan;68(1):104-5.
  145. Dickey W, McConnell B. Celiac disease presenting as the Paterson-Brown Kelly (Plummer-Vinson) syndrome. *Am J Gastroenterol* 1999 Feb;94(2):527-9.
  146. Corazza GR, Zoli G, Di Sabatino A, et al: A reassessment of splenic hypofunction in celiac disease. *Am J Gastroenterol* 1999 Feb;94(2):391-7.
  147. Venturini I, Cosenza R, Miglioli L, et al. Adult celiac disease and primary sclerosing cholangitis: two case reports. *Hepatogastroenterology* 1998 Nov-Dec;(24):2344-7.
  148. Luzzza F, Mancuso M, Imeneo M, et al. *Helicobacter pylori* infection in children with celiac disease: prevalence and clinicopathologic features. *J Pediatr Gastroenterol Nutr* 1999 Feb;28(2):143-6.
  149. Alcalde M, Carro J, Rivero M, et al. Malt lymphoma as first clinical presentation of a celiac disease. *Acta Gastroenterol Belg* 1998 Oct-Dec;61(4):479-82.
  150. Altuntas B, Kansu A, Girgin N. Hepatic damage in gluten sensitive enteropathy. *Acta Pediatr* 1998 Dec;40(6):597-9.
  151. Karoui S, Boubaker J, Hamzaoui S, et al. [Association of asymptomatic celiac disease and Crohn's disease]. *Ann Med Interne (Paris)* 2000 Sept;151(5):411-2.
  152. Khan K, Mitton SG. Congenital Pancreatic insufficiency and celiac disease. *J Pediatr Gastroenterol Nutr* 1999 Jan;28(1):81-3.
  153. Marguerie C, Kaye S, Vyse T, et al. Malabsorption caused by patients who have scleroderma. *Br J Rheumatol* 1995 Sept;34(9):858-61.
  154. Pellecchia MT, Scala R, Filla, et al. Idiopathic cerebellar ataxia associated with celiac disease: lack of distinctive neurological features. *J Neurol Neurosurg Psychiatry* 1999 Jan;66 (1): 32-5.
  155. Cubiella J, Bustamante J, Sans M, et al. Simultaneous presentation of autoimmune thyroiditis and celiac disease in an adult. *Gastroenterol Hepatol* 1998 Nov;21(9):442-4 (spanish).
  156. Johnston SD, Robinson J. Fatal pneumococcal septicaemia in a celiac patient. *Eur J Gastroenterol Hepatol* 1998 Apr;10(4):353-4.
  157. Turcu A, Bonnotte B, Fein F, et al. Association of celiac disease and antiphospholipid syndrome. *Presse Med* 1998 Nov;14,27(35):1789 (french).
  158. Hadjivassiliou M, Grunewald RA, Chattopadhyay AK, et al. Clinical, radiological, neurophysiological, and neuropathological characteristics of gluten ataxia. *Lancet* 1998 Nov 14; 352(9140):1582-5.
  159. Andrelli F, Plotton I, Riou JP, et al. Diabetic instability and celiac disease. A frequent association to keep in mind. *Diabetes Care* 1998 Dec; 21(12):2192-3.
  160. Weiss AA, Yoshida EM, Poulin M, et al. Massive bleeding from multiple gastric ulcerations in a patient with lymphocytic gastritis and celiac sprue. *J Clin Gastroenterol* 1997 Jul;25 (1):354-7.
  161. Pricolo VE, Mangi AA, Aswad B, et al. Gastrointestinal malignancies in patients with celiac sprue. *Am J Surg* 1998 Oct;23,123(43): 1269-73.
  162. Volta U, DeFranceschi L, Lari F, et al. Coeliac disease hidden by cryptogenic hypertransaminasaemia. *Lancet* 1998 Jul 4;352(9121):26-9.
  163. Volta U, De Franceschi L, Molinaro N, et al. Frequency and significance of anti-gliadin and anti-endomyosial antibodies in autoimmune hepatitis. *Dig Dis Sci* 1998 Oct;43(10):2190-5.
  164. Tourtet S, Lachaux A, Frappaz D, et al. Retroperitoneal lymphadenopathy and mesenteric mass mimicking lymphoma in a child with celiac disease. *J Pediatr Gastroenterol Nutr* 1998 Oct;27(4):449-51.
  165. Gonzalez JA, Gonzalez JB, Crespo MJ, et al. Acute gallbladder distensions and recurrent small bowel intussusception in a child with celiac disease. *J Pediatr Gastroenterol Nutr* 1998 Oct;27 (4):444-5.
  166. Bahlouli F, Seror O, Mathieu E, et al: Mesenteric lymph node cavitation disclosing celiac disease in adult. *J Radiol* 1998 May;79(5):431-3.
  167. Perret RS, Borne J. Case 3: T-cell lymphoma of the small bowel developing in long-standing celiac disease (nontropical sprue). *AJR Am J Roentgenol* 1998 Sep;171(3):629-32.
  168. Bleiberg H, Duchateau J, N' Koua M' Bon JB, et al. Increased incidence of lymphomas and carcinomas in patients with coeliac disease. *Eur J Cancer* 1998 Mar;34(4):592-3.
  169. Callejas Rubio JL, Ortego N, Diez-Ruiz A, et al. Celiac disease presenting as chronic anemia associated with heart block. *Am J Gastroenterol* 1998 Aug;93(8):1391-2.
  170. Iovino P, Ciacci C, Sabbatini F, et al. Esophageal impairment in adult celiac disease with steatorrhea. *Am J Gastroenterol* 1998 Aug;93(8):1243-9.
  171. Yousif E, Gupta R, Gelzayd E, et al. Lymphadenopathy in celiac sprue, not necessarily a malignant disease. *J Clin Gastroenterol* 1998 Jul;27(1):82-4.
  172. Curciarello J, Castelletto R, Barbero R, et al. Hepatic sinusoidal dilation associated to giant lymph node hyperplasia (Castleman's): a new case in a patient with periorbital xanthelasma and history of celiac disease. *J Clin Gastroenterol* 1998 Jul;27(1):76-8.
  173. La Placa G, Arlati S, Verdura C, et al. Re-



- port of a case of celiac disease associated with transient erythroblastopenia in pediatric age. *Pediatr Med Chir* 1998 Mar-Apr;20(2):153-4.
174. Simonati A, Battistella PA, Guariso G, et al. Coeliac disease associated with peripheral neuropathy in a child: a case report. *Neuropediatrics* 1998 Jun;29(3):155-8.
175. Hahn JS, Sum JM, Bass D, et al. Celiac disease presenting as gait disturbance and ataxia in infancy. *J Child Neurol* 1998 Jul;13(7):351-3.
176. Empson M, et al. Celiac disease or chronic fatigue syndrome-can the current CDC working case definition discriminate? *Am J Med* 1998 Jul;105(1):79-80.
177. Ots M, Uibo O, Metskula K, et al. IgA-antigliadin antibodies in patients with IgA nephropathy: the secondary phenomenon? *Am J Nephrol* 1999;19(4):453-8.
178. Cronin CC, Jackson LM, Feighery C, et al. Coeliac disease and epilepsy. *QJM* 1998 Apr;91(4):303-8.
179. Rubesin SE, Herlinger H, Furth EE. "Bubbly" duodenal bulb in clinically unsuspected or refractory adult celiac disease. *Abdom Imaging* 1998 Jul-Aug;23(4):449-52.
180. Schweiger GD, Murray JA. Postbulbar duodenal ulceration and stenosis associated with celiac disease. *Abdom Imaging* 1998 Jul-Aug;23(4):347-9.
181. Feeley KM, Heneghan MA, Stevens FM, et al. Lymphocytic gastritis and celiac disease: evidence of a positive association. *J Clin Pathol* 1998 Mar;51(3):207-10.
182. Kolacek S, Petkovic I, Booth IW. Chromosome aberrations in celiac and non-coeliac enteropathies. *Arch Dis Child* 1998 May;78(5):466-8.
183. Kaufmann J, Schneider W, Schmidt W, et al. Concomitant dermatitis herpetiformis Dühring, arthritis and Sjögren syndrome in a patient with celiac disease. *Z Rheumatol* 1998 Apr; 57(2):114-7.
184. Cuoco L, Cammarota G, Tursi A, et al. Disappearance of gastric mucosa-associated lymphoid tissue in coeliac patients after gluten withdrawal. *Scand J Gastroenterol* 1998 Apr;33(4):401-5.
185. Malnick SD, Atali M, Lurie Y, et al. Celiac sprue presenting during the puerperium: a report of three cases and a review of the literature. *J Clin Gastroenterol* 1998 Apr;26(3):164-6.
186. Riobo P, Turbi C, Banet R, et al. Colonic volvulus and ulcerative jejunoileitis due to occult celiac sprue. *Am J Med Sci* 1998 May;315(5):317-8.
187. Bonamico M, Bottaro G, Pasquino AM, et al. Celiac disease and Turner syndrome. *J Pediatr Gastroenterol Nutr* 1998 May;26(5):496-9.
188. Bernasconi A, Bernasconi N, Andreman F, et al. Celiac disease, bilateral occipital calcifications and intractable epilepsy: mechanisms of seizure origin. *Epilepsia* 1998 Mar;39(3):300-6.
189. Cataldo F, Marino V, Ventura A, et al. Prevalence and clinical features of selective immunoglobulin A deficiency in coeliac disease: an Italian multicentre study. Italian Society of Paediatric Gastroenterology and Hepatology (SIGEP) and "Club del Tenue" Working Groups on Coeliac Disease. *Gut* 1998 Mar;42(3):362-5.
190. Susano R, de Quiros JF, Caminal L, et al. Mesenteric lymph node cavitation: a rare complication of celiac disease in the adult. *Gastroenterol Hepatol* 1998 Feb;21(2):84-7.
191. Ciacci C, Iavarone A, Mazzacca G, et al. Depressive symptoms in adult coeliac disease. *Scand J Gastroenterol* 1998 Mar;33(3):247-50.
192. Beyenburg S, Scheid B, Deckert-Schluter M, et al. Chronic progressive leukoencephalopathy in adult celiac disease. *Neurology* 1998 Mar;50(3):820-2.
193. Kingham JG, Ramanaden D, Dawson A. Metachronous small-bowel adenocarcinoma in celiac disease: gluten-free diet is not protective. *Scand J Gastroenterol* 1988 Feb;33(2):218-22.
194. Bouguerra R, Ben Slama C, Marrakchi Z, et al. Coeliac disease associated with Bartter's syndrome. Report of a case. *Tunis Med* 1996 Aug-Sep;74(8-9):361-4.
195. Metcalf J. Coeliac disease and primary biliary cirrhosis: a case for mutual screening. *Gut* 1998 Jan;42(1):9-10.
196. Srinivasan U, Weir DG, Feighery C, et al. Emergence of classic enteropathy after longstanding gluten sensitive oral ulceration. *BMJ* 1998 Jan;17,16(7126):206-7.
197. Image interpretation session: 1997. Ulcerative jejunitis occurring in celiac disease (sprue). *Radiographics* 1998 Jan-Feb;18(1):213-7.
198. Aguirre JM, Rodriguez R, Oribe D, et al. Dental enamel defects in celiac patients. *Oral Surg Oral Med Oral Pathol Radiol Endod* 1997 Dec; 84(6):646-50.
199. Aldersley MA, James TE, Markham AF, et al. Coeliac disease and Behçet's disease. *Br J Ophthalmol* 1997 Aug;81(8):710.
200. Hadjivassiliou M, Chattopadhyay AK, Davies-Jones GA, et al. Neuromuscular disorder as a presenting feature of celiac disease. *J Neurol Neurosurg Psychiatry* 1997 Dec;63(6):770-5.
201. De Santis A, Addolorato G, Romito A, et al. Schizophrenic symptoms and SPECT abnormalities in coeliac patient: regression after a gluten-free diet. *J Intern Med* 1997 Nov;242(5):421-3.
202. Morris MA, Biagi F, Ellis HJ, et al. Are Down syndrome and coeliac disease associated? *Gut* 1997 Nov;41(5):724-5.
203. Heneghan MA, Stevens FM, Cryan EM, et al. Celiac sprue and immunodeficiency states: a 25-year review. *J Clin Gastroenterol* 1997 Sep; 25(2):421-5.
204. Dickey W, McMillan SA, Callender ME. High prevalence of celiac sprue among patients with primary biliary cirrhosis. *J Clin Gastroenterol* 1997 Jul;25(1):328-9.
205. Ghezzi A, Filippi M, Falini A, et al. Cerebral involvement in celiac disease: a serial MRI study in a patient with brainstem and cerebellar symptoms. *Neurology* 1997 Nov;49(5):1447-50.
206. Bili H, Nizou C, Nizou JK, et al. Common variable immunodeficiency and total villous atrophy regressive after gluten-free diet. *Rev Med Interne* 1997;18(9):724-6.
207. Chiarioni G, Bassotti G, Germani U, et al. Gluten-free diet normalized mouth-to-cecum transit of a caloric meal in adult patients with celiac disease. *Dig Dis Sci* 1997 Oct;42(10):2100-5.
208. Gheorghe L, Popescu I, Gheorghe C, et al. Fatal intestinal hemorrhage complicating ileal lymphoma after cyclosporine for unresponsive celiac disease. *Hepatogastroenterology* 1997 Sep-Oct; 44(17):1342-5.
209. Ter Meulen CG, Stronkhorst A, Tan I, et al. Cytomegalovirus-associated gastric ulcers in a patient with celiac disease: coincidence or association? *Am J Gastroenterol* 1997 Oct;92(10):1933-4.
210. Mason CH, Dunk AA. Duodeno-jejunal adenocarcinoma and coeliac disease. *J Clin Pathol* 1997 Jul;50(7):619.
211. Bardella MT, Quatrini M, Zuin M, et al. Screening patients with celiac disease for primary biliary cirrhosis and viceversa. *Am J Gastroenterol* 1997 Sep;92(9):1524-6.
212. Mushtaq N, Marven S, Walker J, et al. Small bowel intussusception in celiac disease. *J Pediatr Surg* 1999 Dec;34(12):1833-5.
213. Romano C, Bartolone S, Sferlazzas C, et al. Systemic lupus erythematosus and coeliac disease. *Clin Exp Rheumatol* 1997 Sept-Oct;15(5): 582-3.
214. Cataldo F, Marino V, Bottaro G, et al. Celiac disease and selective immunoglobulin A deficiency. *J Pediatr* 1997 Aug;131(2):306-8.
215. Gillett HR, Gillett PM, Kingstone K, et al. IgA deficiency and coeliac disease. *J Pediatr Gastroenterol Nutr* 1997 Sept;25(3):366-7.
216. Buderus S, Wagner N, Lentze MJ. Concurrency of celiac disease and juvenile dermatomyositis: result of a specific immunogenetic susceptibility? *J Pediatr Gastroenterol Nutr* 1997 Jul;25(1):101-3.
217. Rea F, Serpico R, Pluvio R, et al. [Dental enamel hypoplasia in a group of celiac disease patients. Clinico-epidemiologic correlations]. *Minerva Stomatol* 1997 Oct;46(10):517-24.
218. Tutt AN, Brada M, Sampson SA. Enteropathy associated T cell lymphoma presenting as an isolated CNS lymphoma three years after diagnosis of celiac disease: T cell receptor polymerase chain reaction studies failed to show the original enteropathy to be clonal disorder. *Gut* 1997 Jun;40(6):801-3.
219. Bonetti G, Sericchio G, Giudici A, et al. Hyperamylasemia due to macroamylasemia in adult gluten enteropathy. *Scand J Clin Lab Invest* 1997 May;57(3):271-3.
220. Heneghan MA, McHugh P, Stevens FM, et al. Addison's disease and selective IgA deficiency in two coeliac patients. *Scand J Gastroenterol* 1997 May;32(5):509-11.
221. Diaz D, Serrano Pena MS, Fernandez Prada M, et al. Presentation of a case of celiac disease as a hemorrhagic diathesis in an adult. *Rev Esp Enferm Dig* 1997 Apr;89(4):333-4 (spanish).
222. Gale L, Wimalaratna H, Brotodiharjo A, et al. Down's syndrome is strongly associated with coeliac disease. *Gut* 1997 Apr;40(4):492-6.
223. Casserly I, Stevens FM, McCarthy CF. Carcinoma of the right side of the colon and celiac disease. *Dig Dis Sci* 1997 Apr;42(4): 862-4 (review).
224. Cote HC, Huntsman DG, Wu J, et al. A new method for characterization and epitope determination of a lupus anticoagulant-associated neutralizing antiprothrombin antibody. *Am J Clin Pathol* 1997 Feb;107(2):197-205.
225. Molitor JL, Saint Louis J, Louvet C, et al. Large granular T-cell lymphocytic leukaemia disclosed by bilateral uveitis: association with celiac disease. *Rev Med Intern* 1997;18(3):237-9 (french).
226. King TS, Anderson JR, Wraight EP, et al. Skeletal muscle weakness and dysphagia caused by acid maltase deficiency: nutritional consequences of coincident celiac sprue. *JPEN J Parenter Enteral Nutr* 1997 Jan-Feb;21(1):46-9.
227. Cano Ruiz A, Barbado Hernandez FJ, Martin Scapa MA, et al. Adult celiac disease presenting as tetany. *An Med Intern* 1996 Dec;13(12):592-4 (spanish).
228. De Sandre G, Caramaschi P. Untreated celiac disease with bad outcome of three pregnancies followed. *Am J Gastroenterol* 1996 Dec;91(12):2653.
229. Addolorato G, Stefanini GF, Capristo E, et al. Anxiety and depression in adult untreated celiac subjects and in patients affected by in-

- inflammatory bowel disease: a personality "trait" or reactive illness? *Hepatogastroenterology* 1996 Nov-Dec;43(12):1513-7.
230. Brocchi E, Corazza GR, Brusco G, et al. Unsuspected celiac disease diagnosed by endoscopic visualization of duodenal bulb micronodules. *Gastrointest Endosc* 1996 Nov;44(5):610-1.
231. Costello C, Smith JR. Vulvodynia associated with coeliac disease. *Br J Obstet Gynaecol* 1996 Nov;103(11):1162-3.
232. Eltumi M, Brueton MJ, Francis N. Ulceration of the small intestine in children with coeliac disease. *Gut* 1996 Oct;39(4):613-4.
233. Kahn O, Fiel MI, Janowitz HD. Celiac sprue, idiopathic thrombocytopenic purpura, and hepatic granulomatous disease. An autoimmune linkage? *J Clin Gastroenterol* 1996 Oct;23(3):214-6.
234. Santer R, Pankau R, Schaub J, et al. William-Beuren syndrome and celiac disease. *J Pediatr Gastroenterol Nutr* 1996 Oct;23(3):339-40.
235. Duane WC. Occult gastrointestinal bleeding in celiac sprue. *N Engl J Med* 1996 Sep;5, 335(10):752.
236. Avery RA, Ducan WE, Alving BM. Severe vitamin K deficiency induced by occult celiac disease BR96-026. *Am J Hematol* 1996 Sep;53(1): 55.
237. Santos JA, Werlin SL. Celiac disease in childhood presenting with pica: case report. *Wis Med J* 1996 Aug;95(8):581-2.
238. Sheehan NJ, Stanton-King K. Co-existent celiac disease and scleroderma. *Br J Rheumatol* 1996 Aug;35(8):807.
239. Usai P, Usai Satta P, Savarino V, et al. Autoimmune neuropathy in adult celiac disease. *Am J Gastroenterol* 1996 Aug;91(8):1676-7.
240. Benitez Leon MD, Hernandez L, Sanchez Arcos E, et al. Changes in the prothrombin complex as clinical manifestation of celiac sprue in adults. *Rev Clin Esp* 1996 Jul;196(7):492-3.
241. Cassagnou M, Boruchowicz A, Guillemot F, et al. Hepatic steatosis revealing celiac disease: a case complicated by transitory liver failure. *Am J Gastroenterol* 1996 Jun;91(6):1278-9.
242. Hungerford C. Constipation can be a sign of celiac disease. *Aust Fam Physician* 1996 May; 25(5):802-3.
243. Bayer M, Kutielek S, Stepan J, et al. Transient hyperphosphataemia and malabsorption syndrome. *J Paediatr Child Health* 1996 Apr;32(2):197.
244. Evron E, Abarbanel JM, Branski D, et al. Polymyositis, arthritis, and proteinuria in a patient with adult celiac disease. *J Rheumatol* 1996 Apr;23(4):782-3.
245. Bertoli A, Di Daniele N, Troisi A, et al. A woman with bone pain, fractures, and malabsorption. *Lancet* 1996 Febr;347(8997):300.
246. Aine L. Coeliac-type permanent-tooth enamel defects. *Ann Med* 1996 Febr;28(1):9-12.
247. Utsinger PD, Weiner SR, Utsinger JH. Human models: Whipple's disease, coeliac disease and jejunoileal bypass. *Baillières Clin Rheumatol* 1996 Febr;10(1):77-103.
248. Saalman R, Fallstrom SP. High incidence of urinary tract infection in patients with coeliac disease. *Arch Dis Child* 1996 Febr;74(2):170-1.
249. Kelkar P, Ross MA, Murray J. Mononeuropathy multiplex associated with celiac sprue. *Muscle Nerve* 1996 Febr;19(2):234-6.
250. Cammarota G, Fedeli G, Tursi A, et al. Coeliac disease and follicular gastritis. *Lancet* 1996 Jan;27,347(8996):268.
251. Garat H, Ecoiffier M, Ollier S, et al. Apropos of rheumatic manifestation of celiac disease: a case of Horton disease? *Presse Med* 1996 Jan; 6-13,25(1):39.
252. Cabrera Chaves T, Gomollon Garcia F, Simon Marco MA, et al. Hemorrhagic diathesis as initial clinical manifestation of celiac disease. *Rev Clin Esp* 1996 Jan;196(1):28-31.
253. Ala-Mello S, Peippo M. Two more diagnostic signs in the Floating-Harbor syndrome. *Clin Dysmorphol* 1996 Jan;5(1):85-8.
254. Fracassetti O, Delvecchio G, Tambini R, et al. Primary sclerosing cholangitis with celiac sprue: two cases. *J Clin Gastroenterol* 1996 Jan; 22(1):71-2.
255. Triolo G, Triolo G, Accardo-Palumbo A, et al. Behçet's disease and coeliac disease. *Lancet* 1995 Dec;2,346(8988):1495.
256. Usai P, Bassotti G, Usai Satta P, et al. Oesophageal motility in adult coeliac disease. *Neurogastroenterol Motil* 1995 Dec;7(4):239-44.
257. Garcia-Gonzalez M, Defarges-Pons V, Monescillo A, et al. Macrolipemia and celiac disease. *Am J Gastroenterol* 1995 Dec;90(12): 2233-4.
258. Domingo Morera JM, Anso Olivan V, Agullo Alcobar JA, et al. Hemorrhagic syndrome caused by an intense deficit of vitamin K-dependent factors as the presenting form of celiac disease. *An Med Intern* 1995 Nov;12(11):568.
259. Zenjari T, Boruchowicz A, Desreumaux P, et al. Association of coeliac disease and portal venous thrombosis. *Gastroenterol Clin Biol* 1995 Nov;19(11):953-4.
260. Lacaille F, Canioni D, Bernard O, et al. Celiac disease, inflammatory colitis, and primary sclerosing cholangitis in a girl with Turner's syndrome. *J Pediatr Gastroenterol Nutr* 1995 Nov;21(4):463-7.
261. Cucchiara S, Bassotti G, Castellucci G, et al. Upper gastrointestinal motor abnormalities in children with active celiac disease. *J Pediatr Gastroenterol Nutr* 1995 Nov;21(4):435-42.
262. Mann NS. Gallbladder and pancreatic dysfunction in celiac disease. *Dig Dis Sci* 1995 Nov;40(11):2380-2.
263. Howat AJ, McPhie JL, Smith DA, et al. Cavitation of mesenteric lymph nodes: a rare complication of coeliac disease, associated with a poor outcome. *Histopathology* 1995 Oct;27(4): 349-54.
264. Horvath K, Gimesi A, Hill ID, et al. Burkitt-type intestinal lymphoma in a child with celiac disease. *J Pediatr Gastroenterol Nutr* 1995 Oct; 21(3):308-12.
265. Bhatia KP, Brown P, Gregory R, et al. Progressive myoclonic ataxia associated with coeliac disease. The myoclonus is of cortical origin, but the pathology is in the cerebellum. *Brain* 1995 Oct;118(Pt 5):1087-93.
266. Ilyas M, Niedobitek G, Agathangelou A, et al. Non-Hodgkin's lymphoma, coeliac disease, and Epstein-Barr virus: a study of 13 cases of enteropathy-associated T and B-cell lymphoma. *J Pathol* 1995 Oct;177(2):115-22.
267. Ghoshal UC, Saraswat VA, Yachha SK. Association of splenic vein obstruction and coeliac disease in an Indian patient. *J Hepatol* 1995 Sept;23(3):358.
268. Ciacci C, Cirillo M, Mellone M, et al. Hypocalciuria in overt and subclinical celiac disease. *Am J Gastroenterol* 1995 Sep;90(9):1480-4.
269. Houtman PM, Hofstra SS, Spoelstra P. Non-coeliac sprue possibly related to methotrexate in a rheumatoid arthritis patient. *Neth J Med* 1995 Sept;47(3):113-6.
270. Komatireddy GR, Marshall JB, Aqel R, et al. Association of systemic lupus erythematosus and gluten enteropathy. *South Med J* 1995 Jun; 88(6):673-6.
271. Pittschieler K. Neutropenia, granulocytic hypersegmentation and coeliac disease. *Acta Paediatr* 1995 Jun;84(6):705-6.
272. Rajvanshi P, Chowdhury JR, Gupta S. Celiac sprue and macroamylasemia: potential clinical and pathophysiological implications. Case study. *J Clin Gastroenterol* 1995 Jun;20(4):304-6.
273. Bridgen ML. A systematic approach to macrocytosis. Sorting out the causes. *Postgrad Med* 1995 May;97(5):171-2,175-7,181-4.
274. Hyraille V, Desprez D, Beauerere L, et al. Uveitis complicating celiac disease and cured by gluten-free diet. *Gastroenterol Clin Biol* 1995 May;19(5):543-4.
275. Laberrenne JE, Boruchowicz A, Wohlshies E, et al. Rhabdomyosarcoma complicating celiac disease. *Gastroenterol Clin Biol* 1995 Apr;19(4): 452-3.
276. Williams SG, Davison AG, Glynn MJ. Hypokalaemic rhabdomyolysis: an unusual presentation of coeliac disease. *Eur J Gastroenterol Hepatol* 1995 Feb;7(2):183-4.
277. Viader F, Chapon F, Dao T, et al. Celiac disease in adult revealed by sensory-motor neuropathy. *Presse Med* 1995 Jan;28,24(4):222-4.
278. Bai JC, Maurino E, Martinez C, et al. Abnormal colonic transit time in untreated celiac sprue. *Acta Gastroenterol Latinoam* 1995;25(5): 277-84.
279. de Vos RJ, de Boer WA, Haas FD. Is there a relationship between psoriasis and coeliac disease? *J Intern Med* 1995 Jan;237(1):118.
280. Chiaravalloti G, Rossomando V, Quinti S, et al. Williams-Beuren syndrome and celiac disease. *Minerva Pediatr* 1995 Jan-Febr;47(1-2):43-6.
281. Germann R, Kuch M, Prinz K, et al. Celiac disease: an uncommon cause of recurrent intussusception. *J Pediatr Gastroenterol Nutr* 1997 Oct;25(4):425-6.
282. Maraj BH, Aldersley MA, Markham AF. Prostate-specific membrane antigen expression in the duodenum: implications in coeliac disease and immunotherapy for prostate cancer. *Lancet* 1998 May;23,351(9115):1559-60.
283. Fine KD, Lee EL, Meyer RL. Colonic histopathology in untreated celiac sprue or refractory sprue: is it lymphocytic colitis or colonic lymphocytosis? *Hum Pathol* 1998 Dec;29(12): 1433-40.
284. Cellier C, Flobert C, Cormier C, et al. Severe osteopenia in symptom-free adult with a childhood diagnosis of coeliac disease. *Lancet* 2000 Mar;4,355(9206):806.
285. Freeman HJ. T cell lymphoma of the thyroid gland in celiac disease. *Can J Gastroenterol* 2000 Jul-Aug;14.
286. Gasbarrini A, Torre ES, Trivellini C, et al. Recurrent spontaneous abortion and intrauterine fetal growth retardation as symptoms of coeliac disease. *Lancet* 2000 Jul;29,356(9227):399-400.
287. Cellier C, Delabesse E, Helmer C, et al. Refractory sprue, coeliac disease, and enteropathy-associated T-cell lymphoma. French Coeliac Disease Study Group. *Lancet* 2000 Jul;15,356(9225):203-8.
288. Menni S, Boccardi D, Brusasco A. Ichthyosis revealing coeliac disease. *Eur J Dermatol* 2000 Jul-Aug;10(5):398-9.
289. Lenander-Lumikari M, Ihalin R, Lahteenoja H. Changes in whole saliva in patients with coeliac disease. *Arch Oral Biol* 2000 May;45(5): 347-54.

290. Araya M, Mondragon A, Perez-Bravo F, et al. Celiac disease in a Chilean population carrying Amerindian traits. *J Pediatr Gastroenterol Nutr* 2000 Oct;31(4):381-6.
291. Martin CJ, Lim KS. Intussusception in coeliac disease: a little-known association. *Aust N Z J Surg* 2000 Apr;70(4):313-4.
292. Biagi F, Lorenzini P, Corazza GR. Literature review on the clinical relationship between ulcerative jejunal celiac disease, and enteropathy-associated t-cell. *Scand J Gastroenterol* 2000 Aug;35(8):785-90.
294. Petri H, Graffelman AW, Knuistingh Neven A, Springer MP, et al. Coeliac disease and chronic fatigue syndrome. *Int J Clin Pract* 2001 Jan-Feb;55(1):71.
295. Ciacci C, Squillante A, Rendina D, et al. *Helicobacter pylori* infection and peptic disease in coeliac disease. *Eur J Gastroenterol Hepatol* 2000 Dec;12(12):1283-7.
296. Gillett HR, Cauch-Dudek K, Jenny E, et al. Prevalence of IgA antibodies to endomysium and tissue transglutaminase in primary biliary cirrhosis. *Can J Gastroenterol* 2000 Sept;14(8):672-5.
297. Rymarczyk G, Hartleb M, Boldys H, et al. Neurogenic tumors of the digestive tract: report of two cases. *Med Sci Monit* 2000 Oct;6(2):383-385.
298. Rujner J, Wisniewski A, Gregorek H, et al. Coeliac disease and HLA-DQ 2 (DQA1\* 0501 and DQAB1\* 0201) in patients with Turner syndrome. *J Pediatr Gastroenterol Nutr* 2001 Jan; 32(1):114-5.
299. Arslan D, Kuyucu T, Kendirci M, et al. Celiac disease and Turner's syndrome: patient report. *J Pediatr Endocrinol Metab* 2000 Nov-Dec;13(9):16929-31.
300. Konturek PC, Karczewska E, Dieterich W, et al. Increased prevalence of *Helicobacter pylori* infection in patients with celiac disease. *Am J Gastroenterol* 2000 Dec;95(12):3661-2.
301. Turcu A, Leveque L, Bielefeld P, et al. Adult celiac disease and hemochromatosis. *Am J Gastroenterol* 2000 Dec;95(12):3661-2.
302. Eliakim R, Sherer DM. Celiac disease: fertility and pregnancy. *Gynecol Obstet Invest* 2001; 51(1):3-7.
303. Bagnato GF, Quattrocchi E, Gulli S, et al. Unusual polyarthritides as a unique clinical manifestation of coeliac disease. *Rheumatol Int* 2000 Dec;20(1):29-30.
304. Garcia-Porrúa C, Gonzalez-Gay MA, Avila-Alvarenga S, et al. Coeliac disease and osteomalacia: an association still present in Western countries. *Rheumatology (Oxford)* 2000 Dec;39(12):1435.
305. Salur L, Uibo O, Talvik I, et al. The high frequency of coeliac disease among children with neurological disorders. *Eur J Neurol* 2000 Nov;7(6):707-11.
306. Gillett HR, Freeman HJ. Prevalence of celiac disease in collagenous and lymphocytic colitis. *Can J Gastroenterol* 2000 Dec;14(11):919-21.
307. Gillett PM, Gillett HR, Israel DM et al. Increased prevalence of celiac disease in girls with Turner syndrome detected using antibodies to endomysium and tissue transglutaminase. *Can J Gastroenterol* 2000 Dec;14(11):915-8.
308. Willis AJ. The neurology and neuropathology of coeliac disease. *Neuropathol Appl Neurobiol* 2000 Dec;26(6):493-6.
309. Fickling WE, McFarlane XA, Bhalla AK, et al. The clinical impact of metabolic bone disease in coeliac disease. *Postgrad Med J* 2001 Jan;77 (903):33-6.
310. Cszizmadia CG, Mearin ML, Oren A, et al. Accuracy and cost-effectiveness of a new strategy to screen for celiac disease in children with Down syndrome. *J Pediatr* 2000 Dec;13(6):756-61.
311. Walker-Smith JA. Celiac disease and Down syndrome. *J Pediatr*. 2000 Dec; 137 (6): 743-4.
312. Carnevale V, Filabozzi P, Cela P, et al: Tiredness: a feature of coeliac disease. *Age Ageing* 2000 Sept;29(5):462-3.
313. Beydoun SR, Copeland DD, Korula J. Generalized myokymia as a unique association with gluten-sensitive enteropathy. *Eur Neurol* 2000; 44(4):254-5.
314. Capristo E, Addolorato G, Mingrone G, et al. Low-serum high-density lipoprotein-cholesterol concentration as a sign of celiac disease. *Am J Gastroenterol* 2000 Nov;95(11):3331-2.
315. Stringer, Veysi VT, Puntis JW, et al. Gastrointestinal ulcers in the *Helicobacter pylori* era. *Acta Paediatr* 2000 Oct;89(10):1181-5.
316. Shamir R, Levine A, Talon-Hacohen M, et al. Faecal occult blood in children with coeliac disease. *Eur J Pediatr* 2000 Nov;159(11):832-4.
317. Malhotra P, Kochhar R, Varma N, et al. Paterson-Kelly syndrome and celiac disease-a rare combination. *Indian J Gastroenterol* 2000 Oct-Dec;19(4):191-2.
318. Frick EJ, Kralstein JR, Scarlato M, et al. Somatostatinoma of the ampulla of Vater in celiac sprue. *J Gastrointest Surg* 2000 Jul-Aug;4(4): 388-91.
319. Stazi AV, Mantovani A. [Celiac disease. Risk factors for women in reproductive age]. *Minerva Ginecol* 2000 May;52(5):189-96.
320. Roy M, Cathebras P, Mosnier JF, et al. [Prevalence of hypertransaminasemia in untreated celiac disease]. *Presse Med* 2000 Sept;23,29 (27):1510.
321. Martinelli P, Troncone R, Papero F, et al. Coeliac disease and unfavourable outcome of pregnancy. *Gut* 2000 Mar;46(3):332-5.
322. Cernibori A, Gobbi G. Partial seizures, cerebral calcifications and celiac disease. *Ital J Neurol Sci* 1995 Apr;16(3):187-91.
323. Gobbi G, Ambrosetto P, Zaniboni MG, et al. Celiac disease, posterior cerebral calcifications and epilepsy. *Brain Dev* 1992 Jan;14(1): 23-9.
324. Gobbi G, Bouquet F, Greco L, et al. Coeliac disease, epilepsy, and cerebral calcifications. The Italian Working Group on Coeliac Disease and Epilepsy. *Lancet* 1992 Aug;22,340(8817): 439-43.
325. Bostwick HE, Berezin SH, Halata MS, et al. Celiac disease presenting with microcephaly. *J Pediatr* 2001 Apr;138(4):589-92.
326. Bushara KO, Goebel SU, Shill H, et al. Gluten sensitivity in sporadic and hereditary cerebellar ataxia. *Ann Neurol* 2001 Apr;49(4):540-3.
327. Lahat E, Broide E, Leshem M, et al. Prevalence of celiac antibodies in children with neurologic disorders. *Pediatr Neurol* 2000 May;22(5): 393-6.
328. Demir H, Yuce A, Kocak N, et al. Celiac disease in Turkish children: presentation of 104 cases. *Pediatr Int* 2000 Oct;42(5):483-7.
329. Holmes GKT. Celiac disease and malignancy. *Journal of Pediatric Gastroenterology and nutrition* 1997;24:S20-S24.